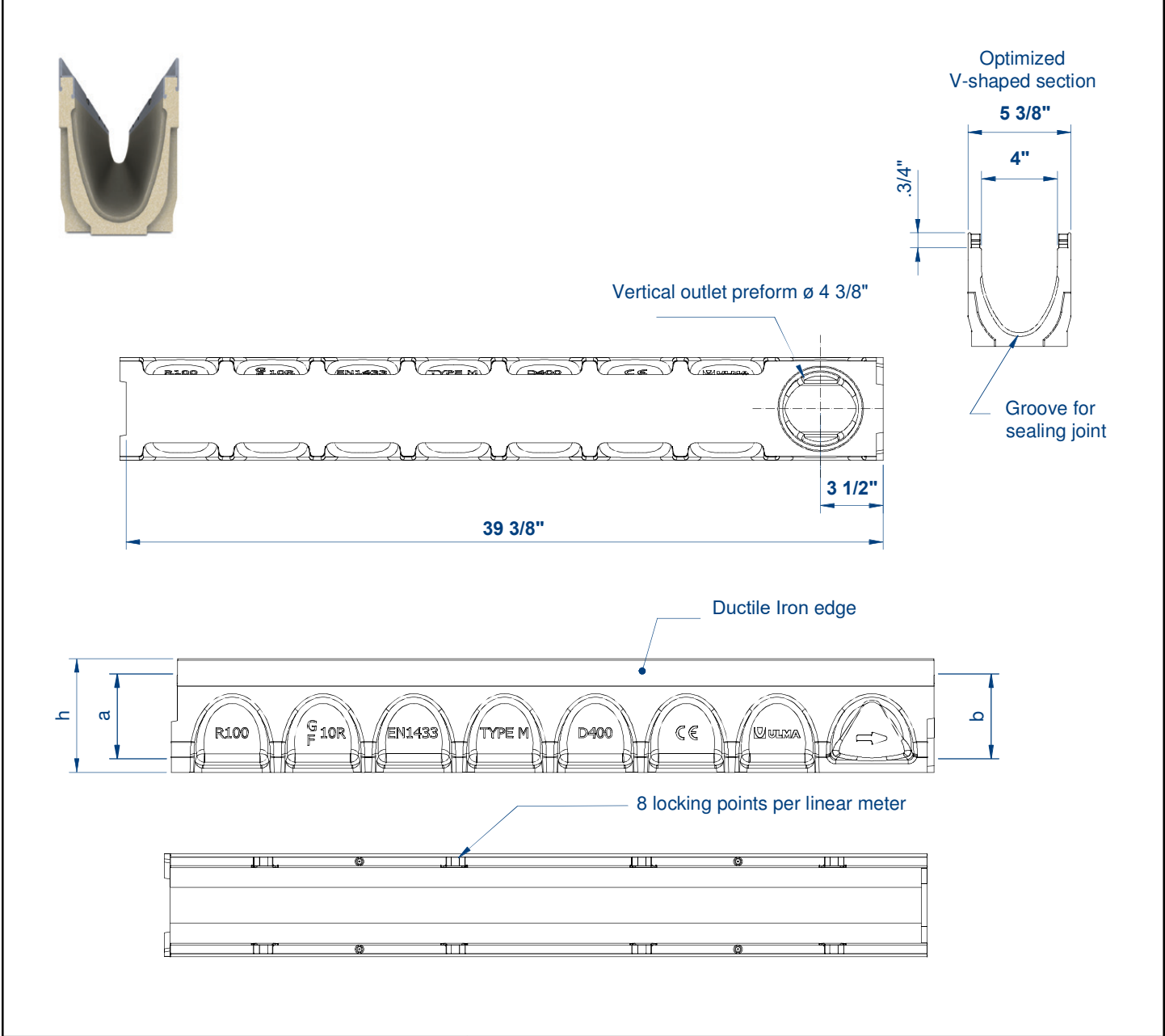



<p>Number</p> <p>R100MFGxx Channel</p>	<p>Series</p> <p>ULM100</p> <p>Trench Drain Channel</p> <p>MultiV100 - Ductile Iron Edge</p>
--	--



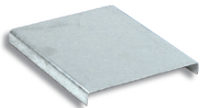
<p>Manufacturer</p> 	<p>Specification</p> <p>ULMA Linear Drainage Channel, type MULTIV+ R100G; Ext width 5 3/8" mm, Internal width 4" with overall heights between 4" and 11"; suitable for cascade-type slopes to collect rainwater; sections 39 3/8" length; optimized V-shape with self-cleaning effect; Ductile Iron edges for lateral protection; Rapidlock® boltless system.</p>
--	--

DISCLAIMER - The customer and the customer's architects, engineers, consultants, and other professionals are completely responsible for the selection installation and maintenance of any product purchased from Trench Drain Supply and/or its manufacturers. TRENCH DRAIN SUPPLY MAKES NO WARRANTY, EXPRESS OR IMPLIED, AS TO THE SUITABILITY, DESIGN, MERCHANTABILITY, OR FITNESS OF THE PRODUCT FOR CUSTOMERS APPLICATION. The drawing and information provided remain the property and copyright of the manufacturer listed. The manufacturer reserves the right to modify specification without notice.

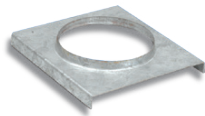
Number R100MFGxx Dimensions	Series ULM100 Trench Drain Specs MultiV100 - Ductile Edge
--	--



Closed



Open



FAST, BOLTLESS SAFETY
LOCKING 8 fastening points
per linear meter.

rapidlock[®]

Manufacturer



MULTIV+100

Channel reference:	Total height		Internal height		Hydraulic section (in ²)	Ø outlet(mm)	
	h (in)	H (in)	a (in)	b (in)		Vert.	Horiz.
R100MFG00R	3.94	3.94	2.44	2.44	08.68	110	-
R100MFG01	3.94	4.13	2.44	2.63	09.44	110	-
R100MFG02	4.13	4.33	2.63	2.83	09.97	110	-
R100MFG03	4.33	4.53	2.83	3.03	10.49	110	-
R100MFG04	4.53	4.72	3.03	3.23	11.02	110	-
R100MFG05	4.72	4.92	3.23	3.43	11.55	110	-
R100MFG06	4.92	5.12	3.43	3.62	12.07	110	-
R100MFG07	5.12	5.31	3.62	3.82	12.60	110	-
R100MFG08	5.31	5.51	3.82	4.02	13.13	110	-
R100MFG09	5.51	5.71	4.02	4.21	13.66	110	-
R100MFG10	5.71	5.91	4.21	4.41	14.18	110	-
R100MFG10R	5.91	5.91	4.41	4.41	14.18	110	-
R100MFG11	5.91	6.10	4.41	4.61	14.96	110	-
R100MFG12	6.10	6.30	4.61	4.80	15.59	110	-
R100MFG13	6.30	6.49	4.80	5.00	16.21	110	-
R100MFG14	6.49	6.69	5.00	5.20	16.85	110	-
R100MFG15	6.69	6.89	5.20	5.39	17.47	110	-
R100MFG16	6.89	7.09	5.39	5.59	18.11	110	-
R100MFG17	7.09	7.28	5.59	5.79	18.72	110	-
R100MFG18	7.28	7.48	5.79	5.98	19.69	110	-
R100MFG19	7.48	7.68	5.98	6.18	19.98	110	-
R100MFG20	7.68	7.87	6.18	6.38	20.62	110	-
R100MFG20R	7.87	7.87	6.38	6.38	20.62	110	-
R100MFG21	7.87	8.07	6.38	6.58	21.28	110	-
R100MFG22	8.07	8.27	6.58	6.77	21.95	110	-
R100MFG23	8.27	8.46	6.77	6.97	22.61	110	-
R100MFG24	8.46	8.66	6.97	7.16	23.28	110	-
R100MFG25	8.66	8.86	7.16	7.37	23.95	110	-
R100MFG26	8.86	9.06	7.37	7.56	24.61	110	-
R100MFG27	9.06	9.25	7.56	7.76	25.28	110	-
R100MFG28	9.25	9.45	7.76	7.95	25.95	110	-
R100MFG29	9.45	9.65	7.95	8.15	26.61	110	-
R100MFG30	9.65	9.84	8.15	8.35	27.78	110	-
R100MFG30R	9.84	9.84	8.35	8.35	27.78	110	-
R100MFG40R	11.81	11.81	10.31	10.31	34.10	110	-

DISCLAIMER - The customer and the customer's architects, engineers, consultants, and other professionals are completely responsible for the selection installation and maintenance of any product purchased from Trench Drain Supply and/or its manufacturers. TRENCH DRAIN SUPPLY MAKES NO WARRANTY, EXPRESS OR IMPLIED, AS TO THE SUITABILITY, DESIGN, MERCHANTABILITY, OR FITNESS OF THE PRODUCT FOR CUSTOMERS APPLICATION. The drawing and information provided remain the property and copyright of the manufacturer listed. The manufacturer reserves the right to modify specification without notice.